



Sporting Car Club of Norfolk

Percy Pig July Table Top Rally

July 2020

Beginner Route Card



Section 1		
1S GS0617	CRO	1F GS0121

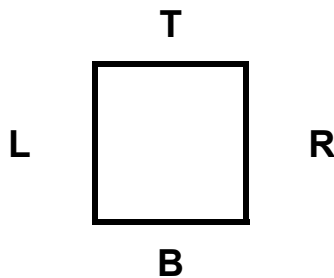
Via the following in order GS departs

T B L B T L T L L T L T T

1S @ 06650 17975 – Lyng Garage – depart NW

1F @ SH49 - approach SSW

Hint:



6¾ Miles



Sporting Car Club of Norfolk

Percy Pig July Table Top Rally

July 2020

Beginner Route Card



Section 1 Route Checks		
1	Does the route pass within 50m of a Public phone?	
2	Does the route pass within 50m of a PoW with a tower?	
3	Does the route pass over SH42?	
4	Does the route pass over a Bridge?	
5	Does the route pass over a MP?	
6	Does the route pass Sparham Hole?	
7	Does the route pass over a MS?	
8	Does the route cross GL18 exactly three times?	
9	Does the route pass Elsing Lane Fm?	
10	Does the route pass Fustyweed?	



Sporting Car Club of Norfolk

Percy Pig July Table Top Rally

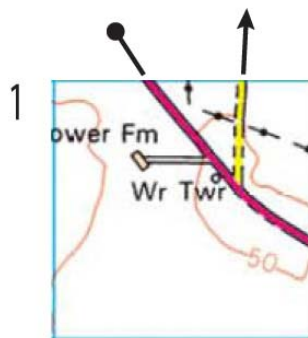
July 2020

Beginner Route Card



Section 2		
2S GS0121	CRO	2F GS0722

Via the following in order GS



2S @ SH49 in GS0121 - depart NNW
3F @ SH49 in GS0722 - approach NNW

Hint: Enter and the exit the grid squares as indicated

9½ Miles



Sporting Car Club of Norfolk

Percy Pig July Table Top Rally

July 2020



Beginner Route Card

Section 2 Route Checks		
1	Does the route pass within 0m of a Public phone?	
2	Does the route pass within 0m of a PoW without tower or spire?	
3	Does the route pass over SH48?	
4	Does the route pass over exactly fifteen Green Circles?	
5	Does the route pass over SH47?	
6	Does the route pass Westfield Fm?	
7	Does the route pass under exactly one Bridge?	
8	Does the route pass over exactly two Bridges?	
9	Does the route pass over SH33?	
10	Does the route pass within 50m of a PoW with a tower?	



Sporting Car Club of Norfolk

Percy Pig July Table Top Rally

July 2020

Beginner Route Card



Section 3		
3S GS0722	WUW	3F GS1118

Via the following in order SH

30 20 6 6 4

3S @ SH49 in GS0722 depart SSE
3F @ YyY in GS1118 approach WNW

Hint: Starting from SH49 add or **subtract** to get the next SH in the sequence

8½ Miles



Sporting Car Club of Norfolk

Percy Pig July Table Top Rally

July 2020

Beginner Route Card



Section 3 Route Checks		
1	Does the route pass within 100m of a Public phone?	
2	Does the route pass within 0m of exactly one PoW with a tower?	
3	Does the route pass over SH45?	
4	Does the route pass the entrance to Whitwell Hall?	
5	Does the route pass Manor Fm?	
6	Does the route pass River Fm?	
7	Does the route pass over exactly two Bridges?	
8	Does the route pass over exactly twenty four Red Dots?	
9	Does the route pass through the letter a?	
10	Does the route pass through the letter w?	



Sporting Car Club of Norfolk

Percy Pig July Table Top Rally

July 2020

Beginner Route Card



Section 4		
4S GS1118	CRO	4F GS1214

Via

ETL x 7

4S @ YyY in GS1118 depart ESE
4F @ SH37 in GS1214 approach W

Hint: Cross the Electricity Transmission Line seven times

10½ Miles



Sporting Car Club of Norfolk

Percy Pig July Table Top Rally

July 2020



Beginner Route Card

Section 4 Route Checks		
1	Does the route pass within 0m of a Public phone?	
2	Does the route pass within 50m of a PoW without tower or spire?	
3	Does the route pass over SH35?	
4	Does the route cross GL12 exactly four times?	
5	Does the route cross GL18 exactly three times?	
6	Does the route pass the entrance to Field Fm?	
7	Does the route pass over the River Wensum more than one time?	
8	Does the route pass over a MS?	
9	Does the route cross GL13 exactly four times?	
10	Does the route pass within 0m of exactly four PoW with a tower?	



Sporting Car Club of Norfolk

Percy Pig July Table Top Rally

July 2020

Beginner Route Card



Section 5		
5S GS1214	CRO	5F

Via the following in order junction instructions

9:35 1:45 4:55 5:50 4:50 3:55 5:50

5:50 5:45 6:45 3:55 5:10 7:50 5:00

5S @ SH37 in GS1214 depart E

5F @ next SH

Hint: Digital clock face - approach on the hour and depart on the minute

7 Miles



Sporting Car Club of Norfolk

Percy Pig July Table Top Rally

July 2020



Beginner Route Card

Section 5 Route Checks		
1	Does the route pass over SH58?	
2	Does the route pass over SH55?	
3	Does the route pass Willows Fm?	
4	Does the route pass over SH19?	
5	Does the route pass within 0m of a Public phone?	
6	Does the route pass over SH56?	
7	Does the route pass Collin Green Fm?	
8	Does the route cross GL13 exactly four times?	
9	Does the route pass over SH42?	
10	Does the route pass within 0m of a PoW with a tower?	