

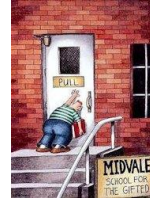


## ***Sporting Car Club of Norfolk***

### ***Percy Pig July Table Top Rally***

*July 2020*

#### ***Beginner Route Card***



Section 1		
1S GS0617	CRO	1F GS0121

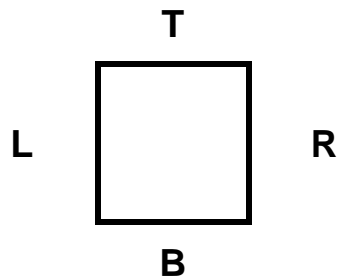
Via the following in order GS departs

**T B L B T L T L L T L T T**

1S @ 06650 17975 – Lyng Garage – depart NW

1F @ SH49 - approach SSW

Hint:



<b>6¾ Miles</b>
-----------------



# **Sporting Car Club of Norfolk**

## **Percy Pig July Table Top Rally**

July 2020



### **Beginner Route Card**

Section 1 Route Checks		
1	<i>Does the route pass within 50m of a Public phone?</i>	N
2	<i>Does the route pass within 50m of a PoW with a tower?</i>	Y
3	<i>Does the route pass over SH42?</i>	N
4	<i>Does the route pass over a Bridge?</i>	Y
5	<i>Does the route pass over a MP?</i>	N
6	<i>Does the route pass Sparham Hole?</i>	N
7	<i>Does the route pass over a MS?</i>	N
8	<i>Does the route cross GL18 exactly three times?</i>	Y
9	<i>Does the route pass Elsing Lane Fm?</i>	N
10	<i>Does the route pass Fustyweed?</i>	N



# Sporting Car Club of Norfolk

## Percy Pig July Table Top Rally

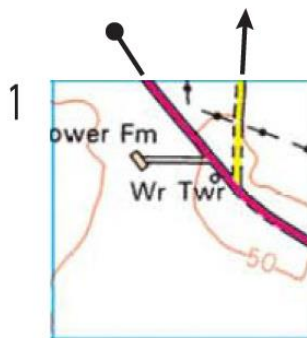
July 2020



### Beginner Route Card

Section 2		
2S GS0121	CRO	2F GS0722

Via the following in order GS



2S @ SH49 in GS0121 - depart NNW  
3F @ SH49 in GS0722 - approach NNW

Hint: Enter and the exit the grid squares as indicated

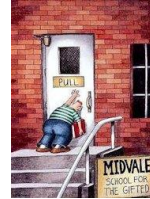
9½ Miles
----------



# **Sporting Car Club of Norfolk**

## **Percy Pig July Table Top Rally**

July 2020



### **Beginner Route Card**

Section 2 Route Checks		
1	Does the route pass within 0m of a Public phone?	Y
2	Does the route pass within 0m of a PoW without tower or spire?	N
3	Does the route pass over SH48?	N
4	Does the route pass over exactly fifteen Green Circles?	Y
5	Does the route pass over SH47?	N
6	Does the route pass Westfield Fm?	Y
7	Does the route pass under exactly one Bridge?	N
8	Does the route pass over exactly two Bridges?	N
9	Does the route pass over SH33?	N
10	Does the route pass within 50m of a PoW with a tower?	N

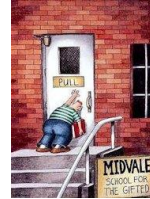


## ***Sporting Car Club of Norfolk***

### ***Percy Pig July Table Top Rally***

*July 2020*

#### ***Beginner Route Card***



Section 3		
3S GS0722	WUW	3F GS1118

Via the following in order SH

**30      20      6      6      4**

3S @ SH49 in GS0722 depart SSE  
3F @ YyY in GS1118 approach WNW

Hint: Starting from SH49 add or **subtract** to get the next SH in the sequence

<b>8½ Miles</b>
-----------------



# **Sporting Car Club of Norfolk**

## **Percy Pig July Table Top Rally**

July 2020



### **Beginner Route Card**

Section 3 Route Checks		
1	<i>Does the route pass within 100m of a Public phone?</i>	Y
2	<i>Does the route pass within 0m of exactly one PoW with a tower?</i>	Y
3	<i>Does the route pass over SH45?</i>	Y
4	<i>Does the route pass the entrance to Whitwell Hall?</i>	N
5	<i>Does the route pass Manor Fm?</i>	Y
6	<i>Does the route pass River Fm?</i>	Y
7	<i>Does the route pass over exactly two Bridges?</i>	Y
8	<i>Does the route pass over exactly twenty four Red Dots?</i>	Y
9	<i>Does the route pass through the letter a?</i>	N
10	<i>Does the route pass through the letter w?</i>	Y

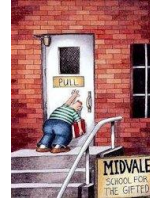


## ***Sporting Car Club of Norfolk***

### ***Percy Pig July Table Top Rally***

*July 2020*

#### ***Beginner Route Card***



Section 4		
4S GS1118	CRO	4F GS1214

Via

ETL x 7

4S @ YyY in GS1118 depart ESE  
4F @ SH37 in GS1214 approach W

Hint: Cross the Electricity Transmission Line seven times

10½ Miles
-----------



# **Sporting Car Club of Norfolk**

## **Percy Pig July Table Top Rally**

July 2020



### **Beginner Route Card**

Section 4 Route Checks		
1	Does the route pass within 0m of a Public phone?	Y
2	Does the route pass within 50m of a PoW without tower or spire?	N
3	Does the route pass over SH35?	Y
4	Does the route cross GL12 exactly four times?	N
5	Does the route cross GL18 exactly three times?	Y
6	Does the route pass the entrance to Field Fm?	N
7	Does the route pass over the River Wensum more than one time?	N
8	Does the route pass over a MS?	Y
9	Does the route cross GL13 exactly four times?	Y
10	Does the route pass within 0m of exactly four PoW with a tower?	N



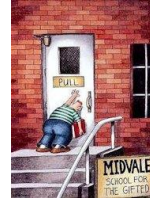


## ***Sporting Car Club of Norfolk***

### ***Percy Pig July Table Top Rally***

*July 2020*

#### ***Beginner Route Card***



Section 5		
5S GS1214	CRO	5F

Via the following in order junction instructions

**9:35      1:45      4:55      5:50      4:50      3:55      5:50**

**5:50      5:45      6:45      3:55      5:10      7:50      5:00**

5S @ SH37 in GS1214 depart E

5F @ next SH

Hint: Digital clock face - approach on the hour and depart on the minute

<b>7 Miles</b>
----------------



# Sporting Car Club of Norfolk

## Percy Pig July Table Top Rally

July 2020



### Beginner Route Card

Section 5 Route Checks		
1	Does the route pass over SH58?	N
2	Does the route pass over SH55?	Y
3	Does the route pass Willows Fm?	Y
4	Does the route pass over SH19?	N
5	Does the route pass within 0m of a Public phone?	N
6	Does the route pass over SH56?	N
7	Does the route pass Collin Green Fm?	N
8	Does the route cross GL13 exactly four times?	Y
9	Does the route pass over SH42?	N
10	Does the route pass within 0m of a PoW with a tower?	N
Tie Break		901